

ToupCam Driver Installation Guidance

1 Driver installation

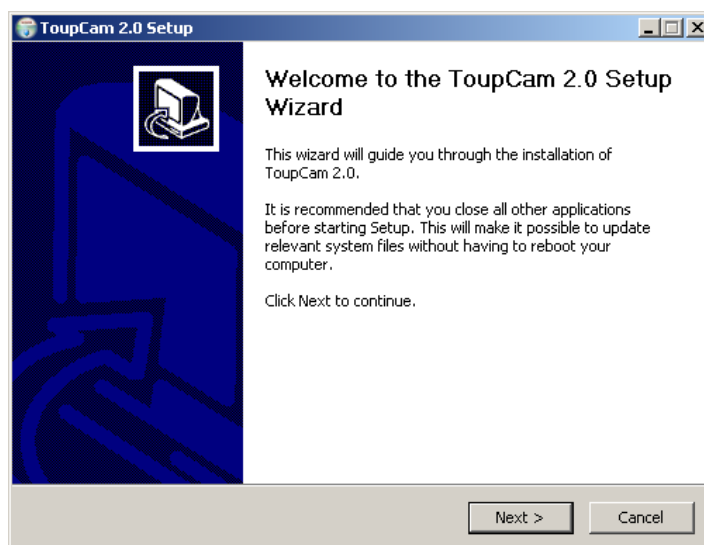
The elaborated **ToupCam** driver install package offers you one-key driver install user experience. The only thing you need to do to install **ToupCam** camera device driver is to click the mouse button as the following instructions.

NOTE: If the camera device is connected with the computer before driver installation, it will pop-up a **Found New Hardware Wizard** dialog as follow:



Click **Cancel** to close the **Found New Hardware** dialog first, or the driver package will hang in the install progress:

1. Download the **ToupCam.exe** driver package from **ToupTek**'s website or copy it from the shipped CD;
2. Double click **ToupCam.exe**, the following dialog will open:



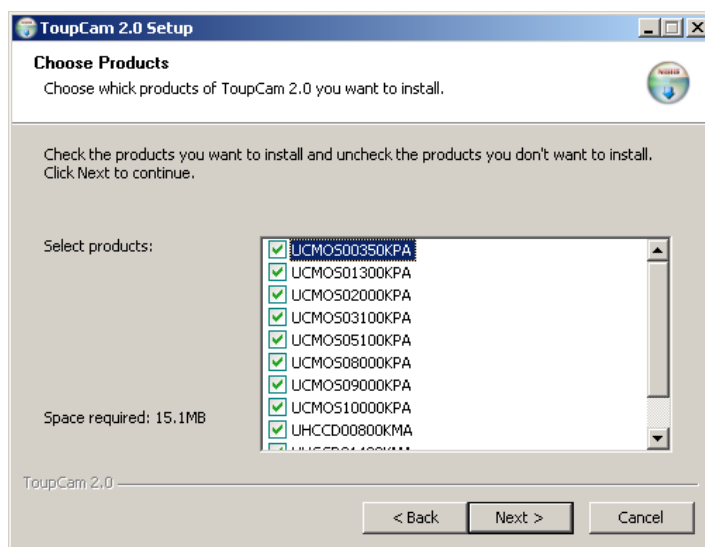
Click **Next>**;

3. The following dialog will open, and you can select which product driver you want to install:

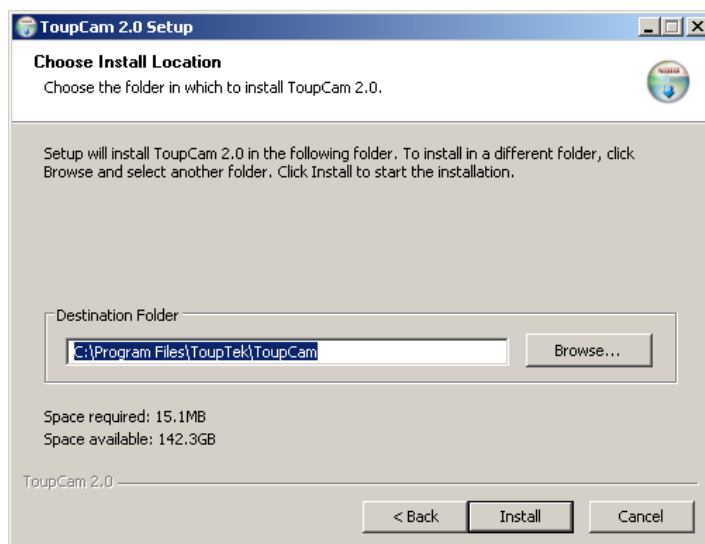


After you have selected the products, click **Next>**;

4. The following dialog will open, keep the driver you wish to install and uncheck the others to prevent install on your computer, click **Next>**;

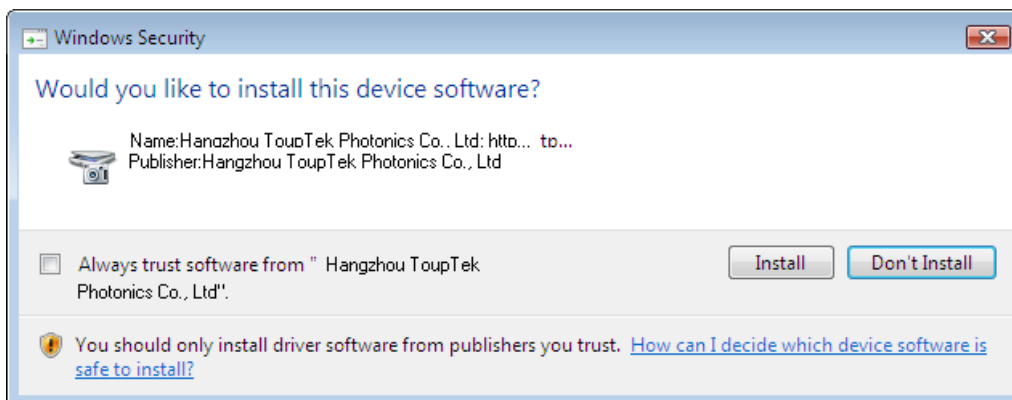


5. The following dialog will open for you to choose the install the location.



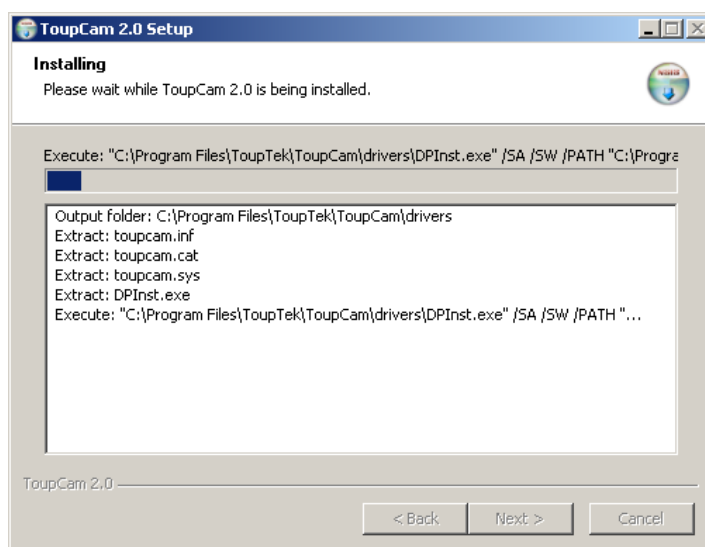
It's recommended to keep the default **Destination Folder**. Click **Install**;

6. The following dialog will open:



Click **Install** button;

7. The following dialog will open:



The driver will be automatically installed;

8. When the driver installation finishes, the following dialog will open:



Click **Finish** button to finish the driver installation. For **Windows** version above **XP**, the whole driver installation is finished. For **Windows XP**, there are several additional steps to do:

2 Special Notes for Windows XP

1. Plug the camera device (if the device is already plugged in the driver installation, unplug it and replug it now);
2. The following **Found New Hardware** dialog will open:

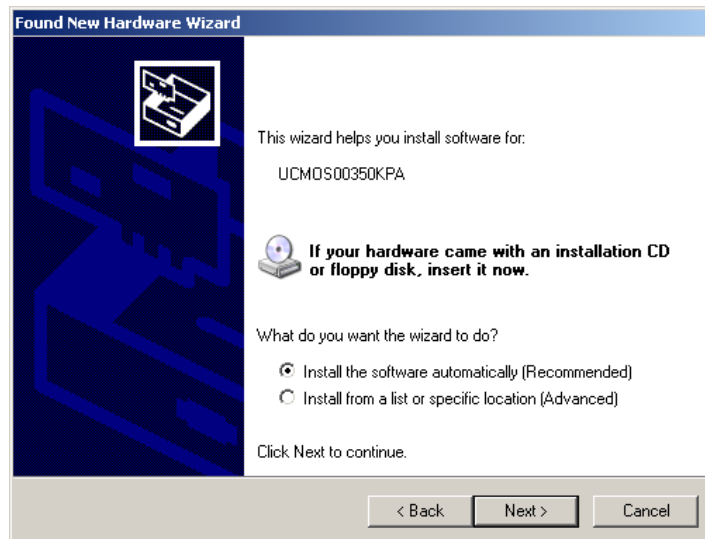


Check **No, not this time** and the dialog will become:



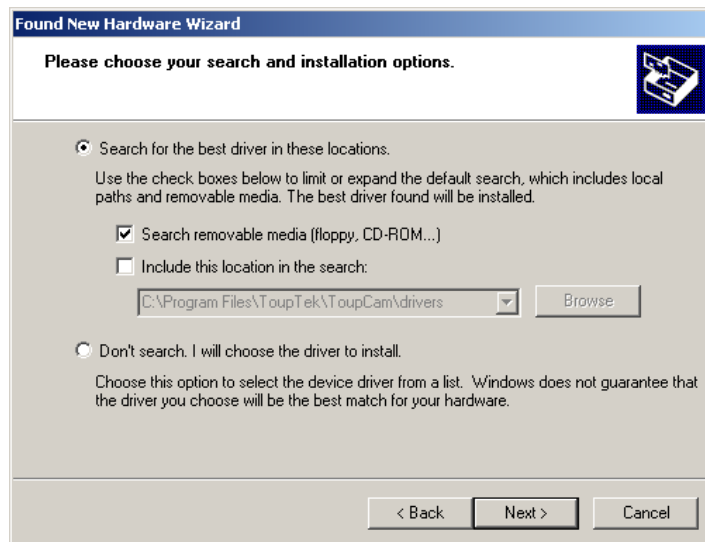
The **Next>** now is enable. Click **Next>**

3.The dialog will become;



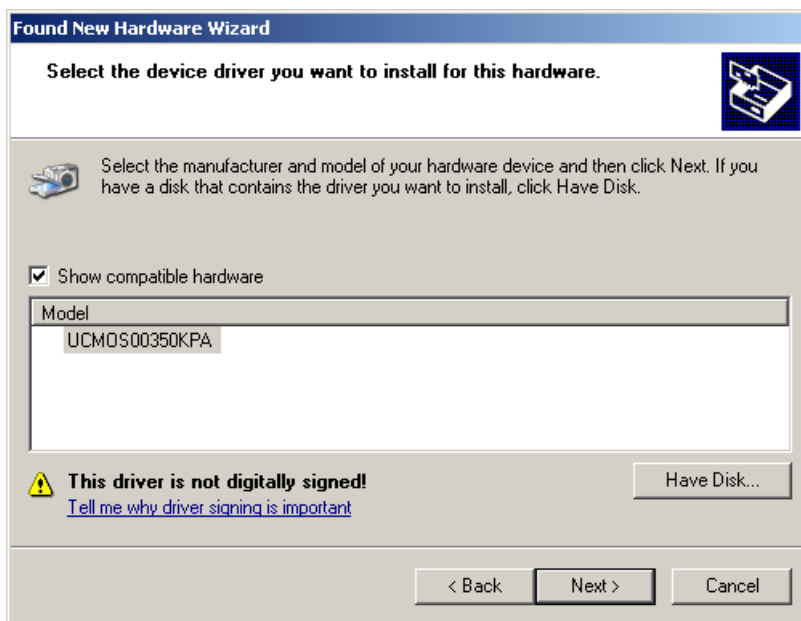
Check **Install from a list or specific location (Advanced)** and click **Next>**;

4. The dialog will become



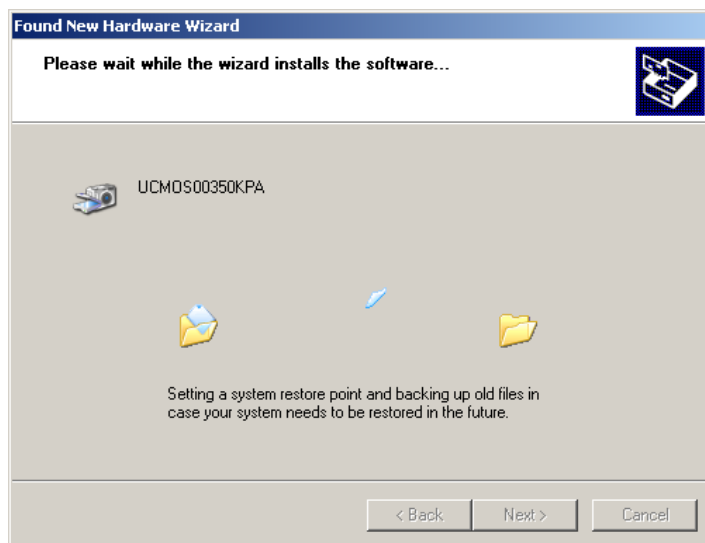
Choose **Don't search. I will choose the driver to install**; Click **Next>**

5. The following dialog will open:

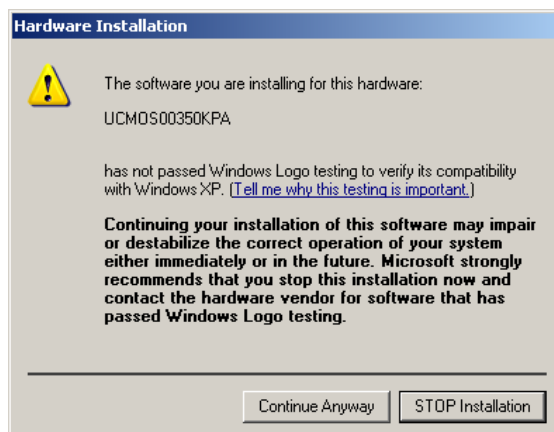


Check **Show compatible hardware** and select the driver name corresponding to your camera device. Click **Next>** :

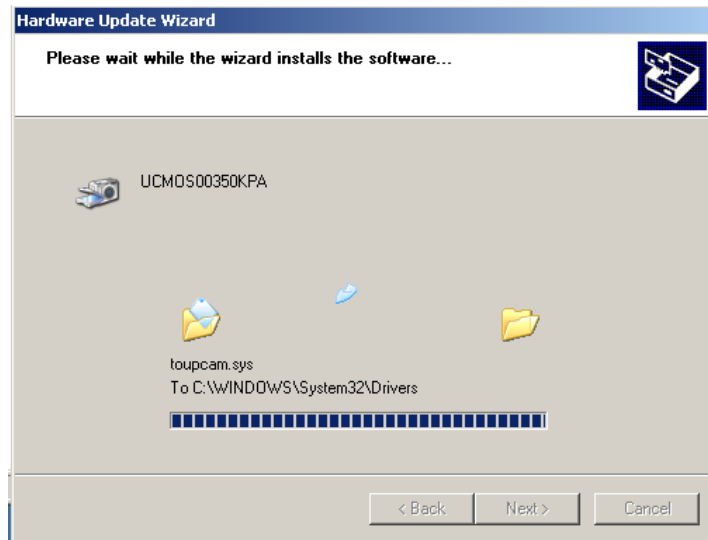
6. The following dialog will open:



And then at the same time, it will automatically pop-up the following dialog

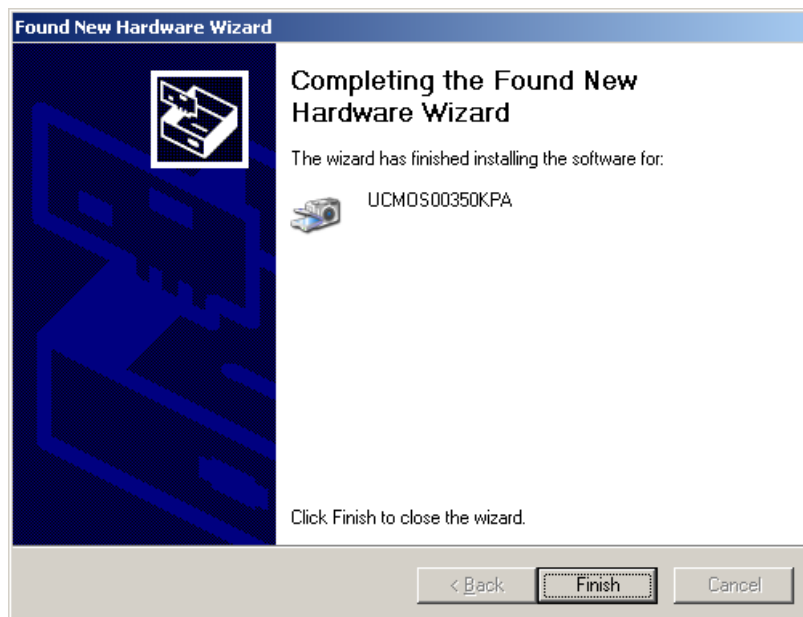


Click **Continue Anyway** and the following dialog will open to show you that now the computer begins to install the correct camera driver.



Wait for a short time until it is finished.;

7. When the driver is installed into the system, the following dialog will open:

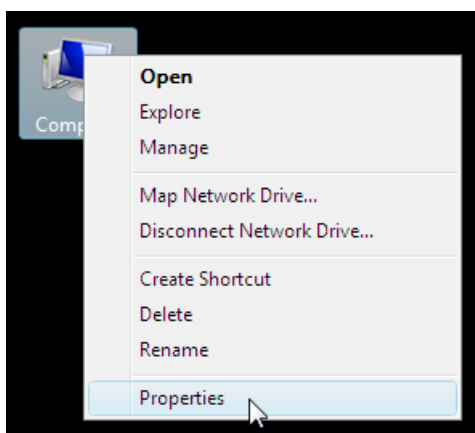


Click **Finish** to finish the driver installation under Windows XP.

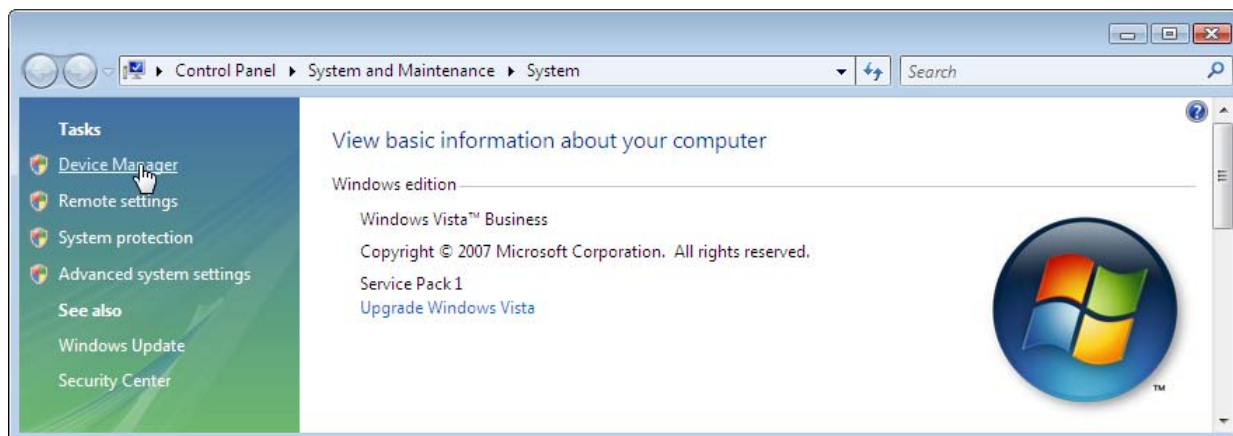
3 Driver Installation Validation (for Windows version above XP)

In order to check whether or not the driver package is successfully installed, follow the instructions below:

1. Plug the camera device (if the device is already plugged in the driver installation, unplug it and replug it);
2. Right click on the **Computer** icon and choose **Properties** menu item:

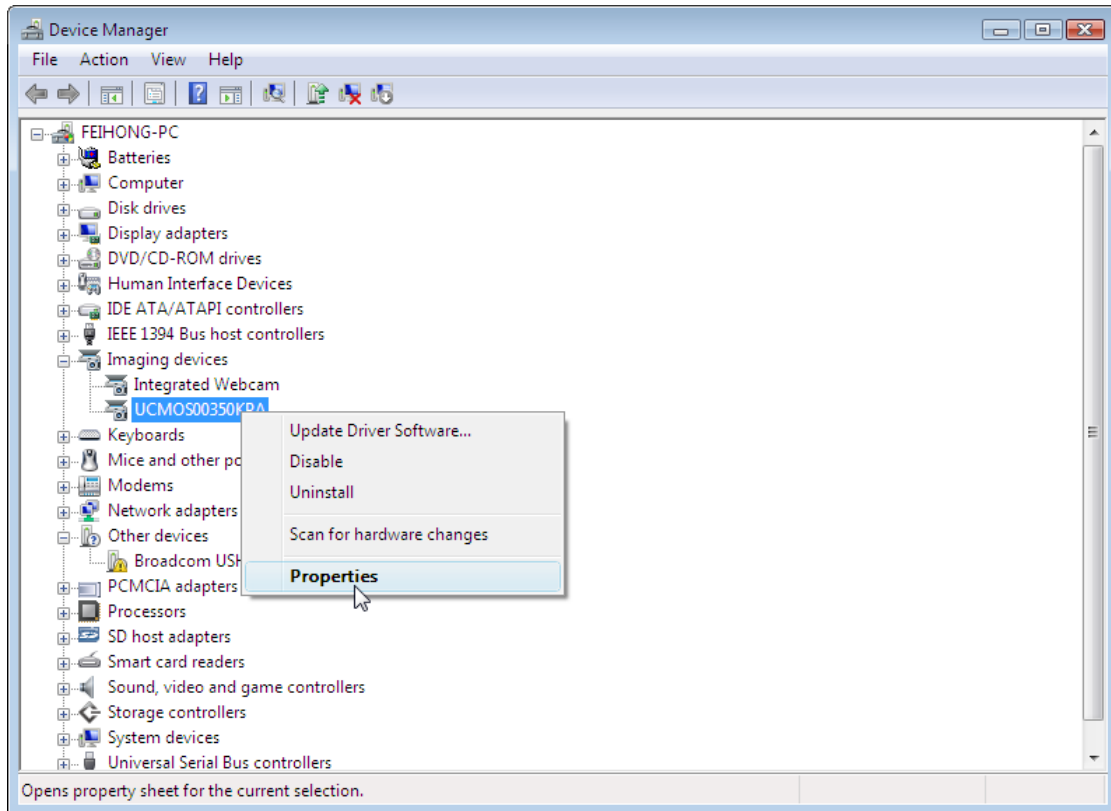


3. The following window will open:



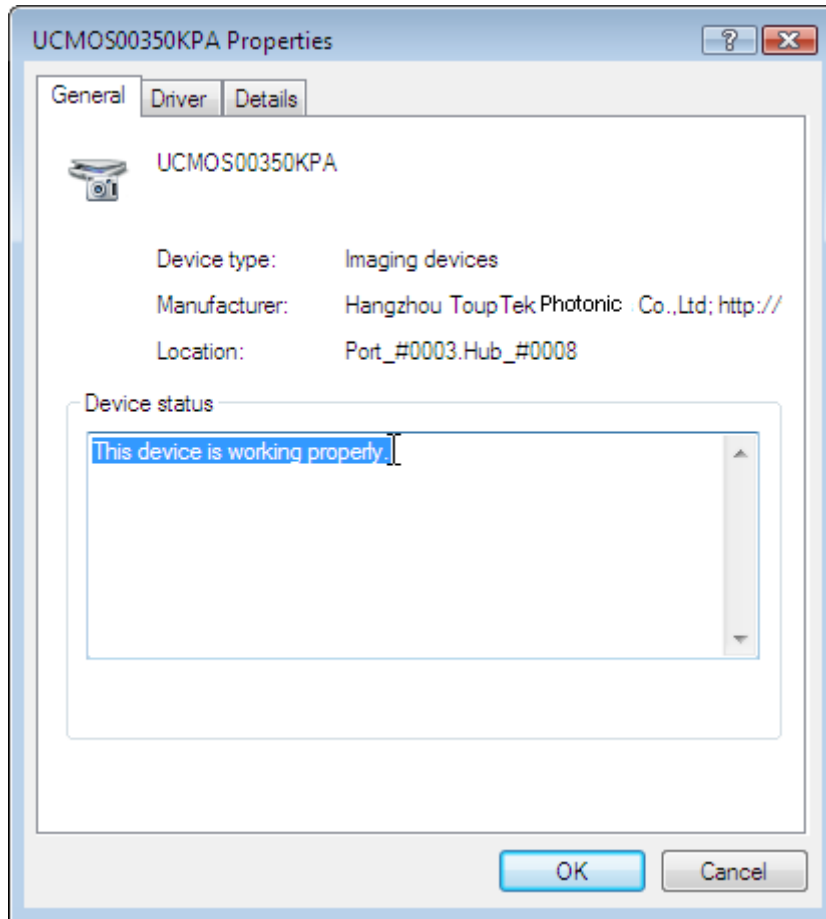
Click **Device Manager** on the upper left corner of the window;

4. The following window will open:



Expand the **Imaging Devices** node. Right click on the camera device name and choose **Properties**;

5. The following dialog will open:

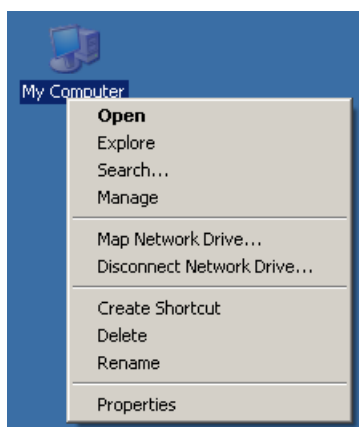


The **"This device is working properly."** string indicates the device driver is correctly installed.

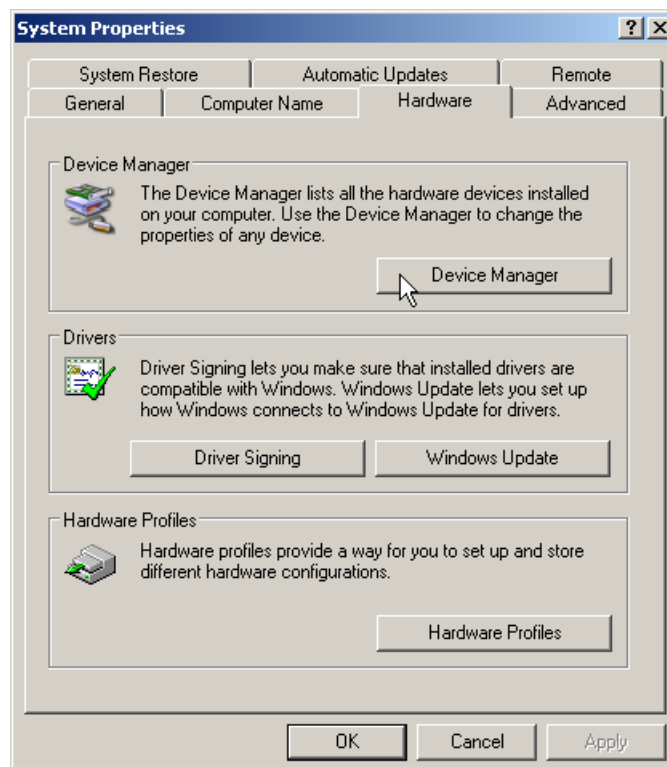
4 Driver Installation Validation (for Windows XP)

In order to check whether or not the driver package is successfully installed, follow the instructions below:

1. Plug the camera device (if the device is already plugged in the driver installation, unplug it and replug it);
2. Right click on the **My Computer** icon and click **Properties** menu item:

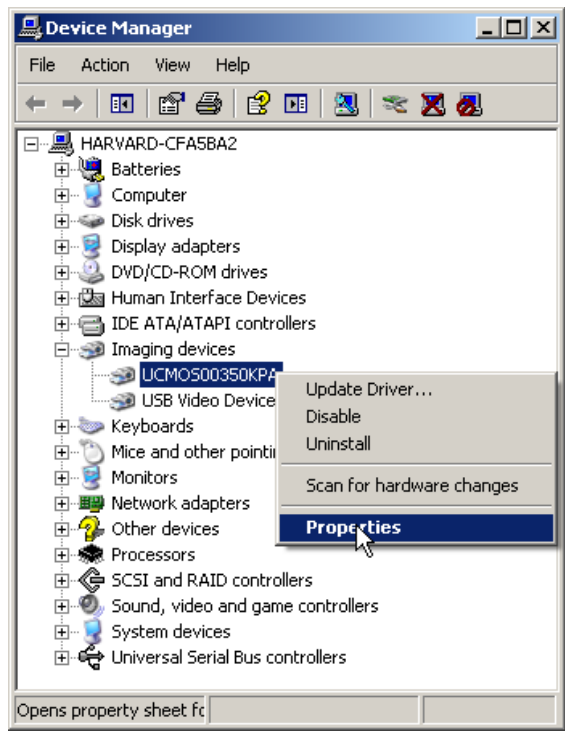


3. The following window will open:



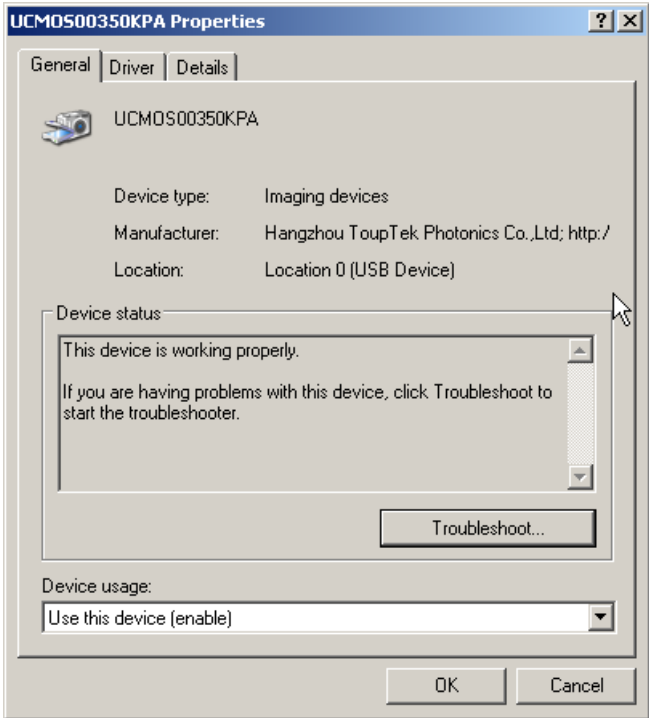
Switch to the **Hardware** tab and click the **Device Manage** button;

4. The following window will open:



Expand the Imaging Device node, right click on the camera device name and choose **Properties**;

5. The following dialog will open:

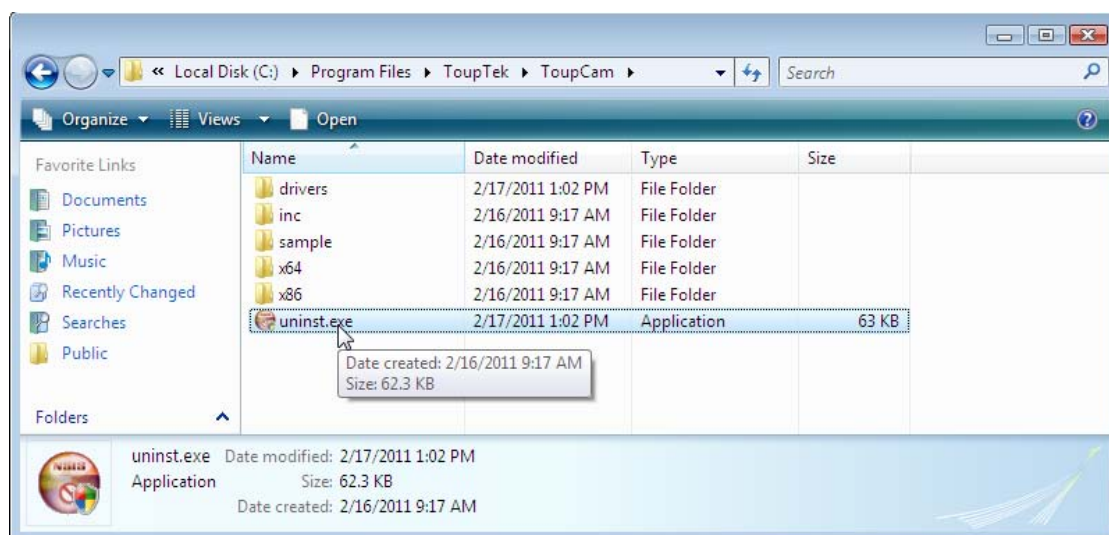


The **"This device is working properly"** string in the **Device status** indicates the device driver is correctly installed.

5 Driver deletion

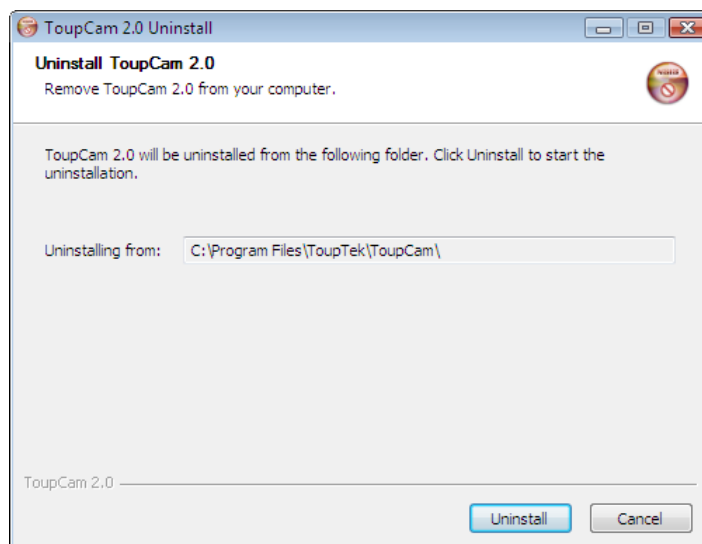
There is no need to delete the camera device driver manually. Each time when you install a newer version of the driver package, old driver files will be automatically overwritten. However, for the completeness of the manual, the driver deletion instructions are listed below:

1. Navigate to your driver installation folder:



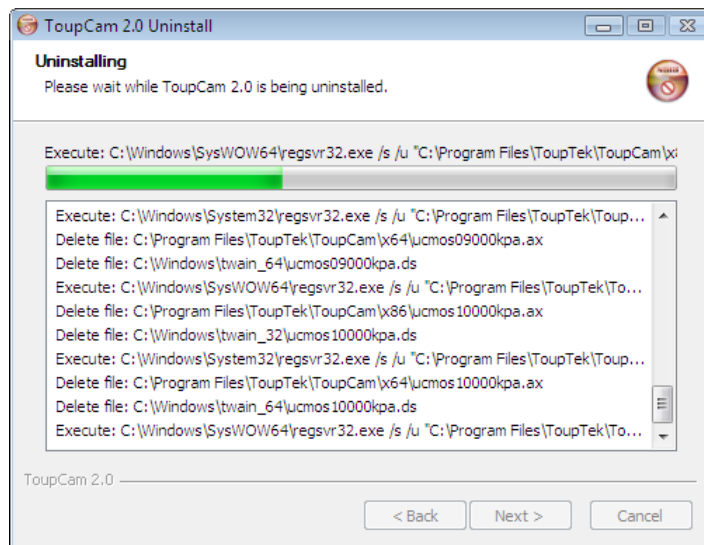
Double click **uninst.exe**;

2. The following dialog will open:



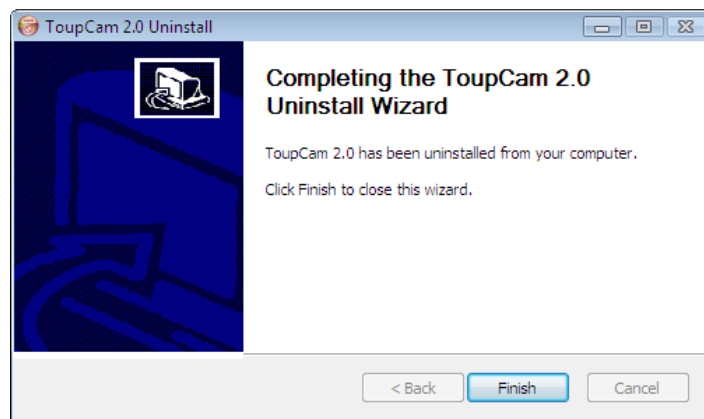
Click **Uninstall** button;

3. The following dialog will open:



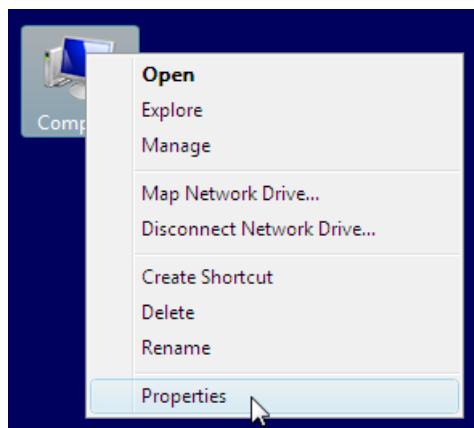
The driver uninstallation will run automatically;

4. When the driver unistallation finishes, the following dialog will open:

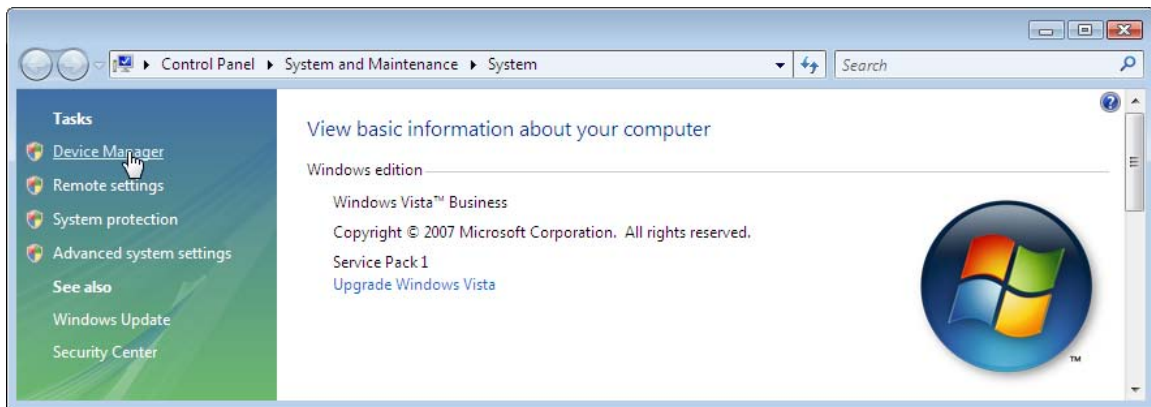


Click **Finish** button to finish the driver uninstallation; For **Windows XP**, the driver deletion is finished, while for **Windows** version above **XP**, the following steps should be performed.

6. Right click on the **Computer** icon and choose **Properties**

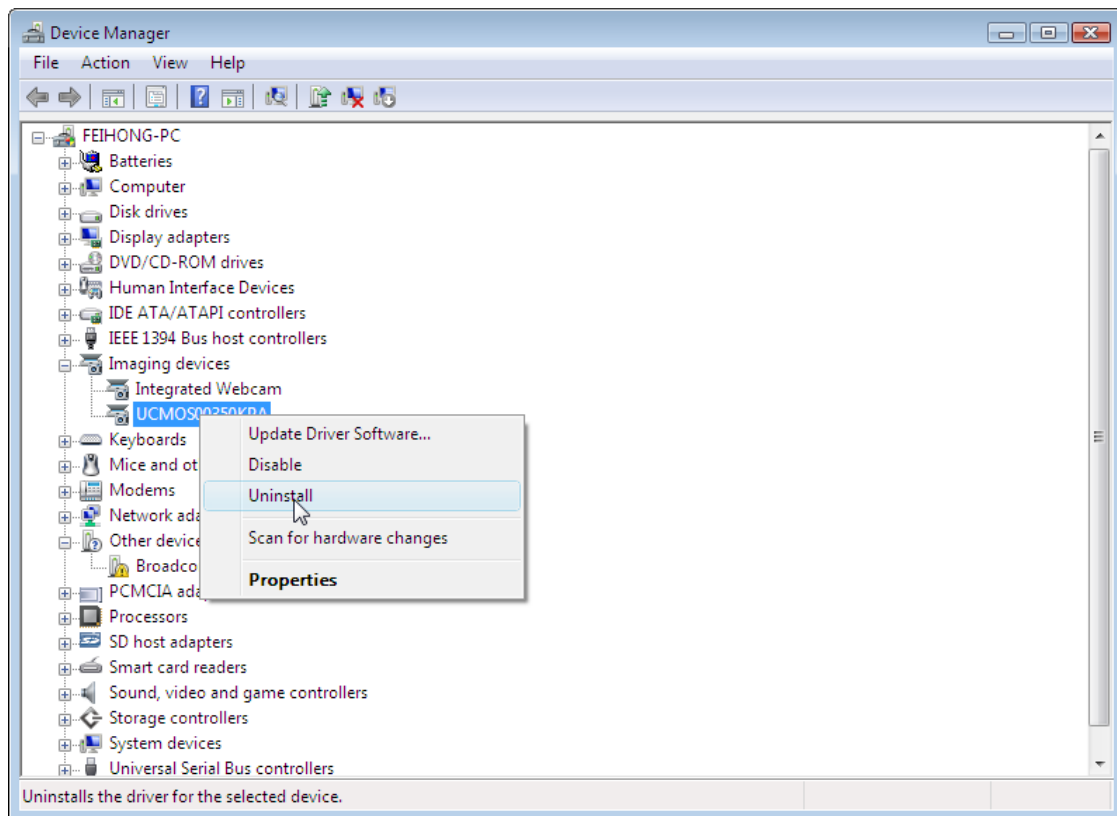


7. The following window will open:



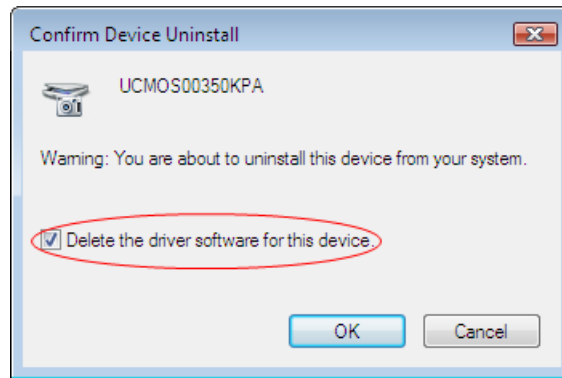
Click **Device Manager** on the upper left corner of the window;

8. The following window will open:



Make sure your device is plugged in the computer. Right click on the device in the **Imaging Devices** node, and choose **Uninstall** menu item:

9. The following dialog will open:



Check **"Delete the driver software for this device."** and click **OK** button, the device driver will be deleted from your system automatically.